

COATS®

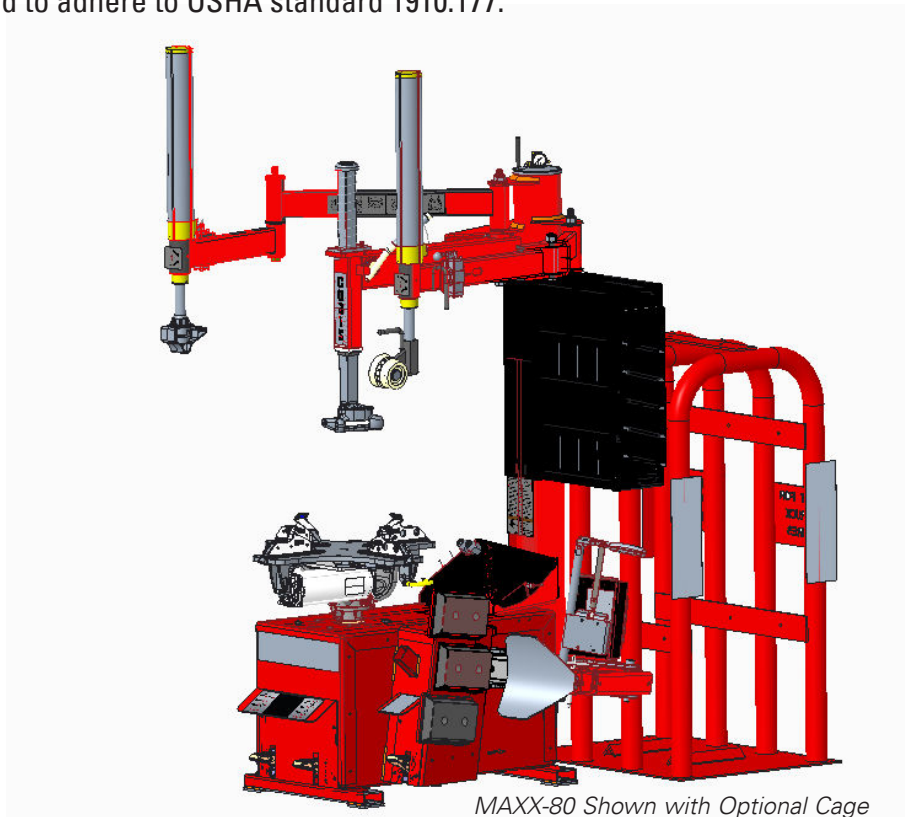
70/80/90

MAXX-Series

Rim Clamp® Tire Changers

For servicing single piece automotive and most light truck tire/wheel assemblies.

Any other type, including tube type and agricultural, require special handling. Tires identified as truck tires need to adhere to OSHA standard 1910.177.



MAXX-80 Shown with Optional Cage

Parts Identification

READ these instructions before placing unit in service. KEEP these and other materials delivered with the unit in a binder near the machine for ease of reference by supervisors and operators.

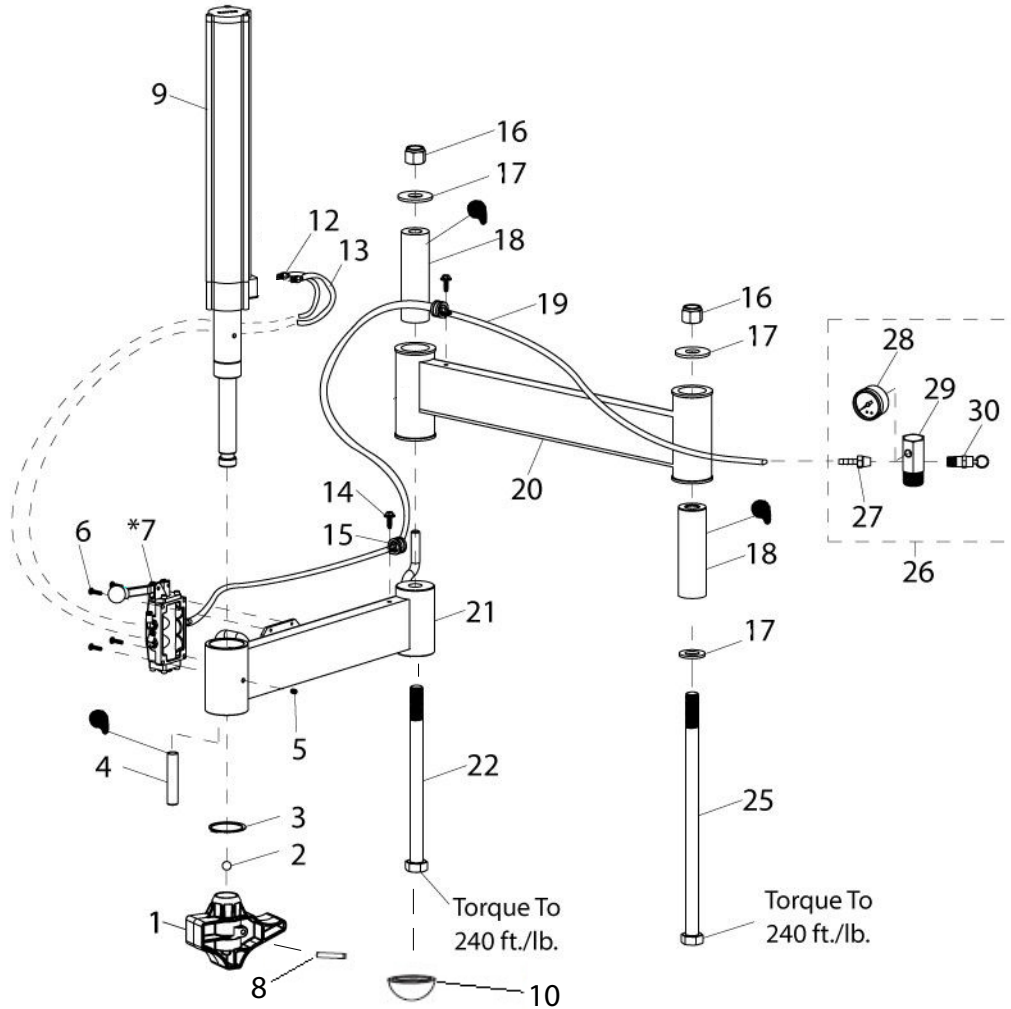
Parts Identification

The following pages include parts breakdowns with exploded view illustrations to help with ordering replacement or spare kits. Assemblies are noted where it is recommended that individual parts not be ordered separately. Note that the parts view illustrations are for multiple models and not all parts shown are on all models. Every effort is made to supply accurate exploded views, however, due to interim changes in manufacturing operations, some units may not be exactly as illustrated.

Table of Contents

Parts Identification	2
Robo-Arm® Helper Device Assembly	4
Swing Arm Assembly	5-6
RoboRoller™ Powered Assist Assembly.....	7
Inflation Bracket and Tower Assembly.....	8-9
Chassis System.....	10
BL Arm Assembly	11
Foot Pedal Assemblies	12-13
Table Top and Shaft Housing Assembly.....	14-15
Valve Assemblies	16
Cylinder Assemblies	17
Leverless Bead Lifter	18
Electrical Schematics	19-20
Domestic and C.S.A. (Single-Speed Motors)	19
220V Motor (2-Speed).....	20
Pneumatic Diagram.....	21-22
Rim Clamp® Tire Changer	Back Cover

Robo-Arm® Helper Device Assembly



● APPLY GREASE TO THESE LOCATIONS

Item	Part No.	Description
1	8500916701	Plastic Foot Hold Down
2	8301017	ø1/2" Steel Ball
3	8183637	ø2 Ext. Retaining Ring
4	70002301	1/2" Rubber Hand Grip
5	85610656	1/4-20 x 5/16 LG BHCS
6	8182001	Screw - 10-24 x 3/4 Lg. SHCS
*7	see p.16	Robo Arm Valve
8	905563	Pin-Roll, 1/4X1-1/2
9	8560888401	Cylinder Assembly 2.5" Dia.
10	85611353	Rubber Cushion
12	8181996	1/8 NPT x 1/8 Tube St. Fitting
13	**	1/8 x 6" Plastic Tube
14	8106301	1/4-20 x 3/4" Soc Hd HWHST Screw
15	8182044	Neoprene Cushion Clamp
16	8182016	3/4"-10 Nylon Insert Lock Nut, Gr.5
17	8100994	3/4" x 2" OD Flat Washer
18	8181038	Swing Arm Pivot Pin
19	**	1/4, 58" Black Rubber Hose
20	81849043	Rear Arm Weldment (Red)
21	8561134903	Front Arm Weldment (Red)
22	8183703	3/4-10 x 10-1/2" HHCS, Gr5

Item	Part No.	Description
25	8183635	3/4-10 x 14-1/2" HHCS, Gr.5
26	8184059	Manifold Assembly
27	8000378	1/4" Brass St. Fitting
28	8108968	Air Gauge
29	8183434	Manifold/Gauge
30	8182599	Safety Valve

* Valve (available only as individual components, see page 16)

**Hose Reels

Hose Reels

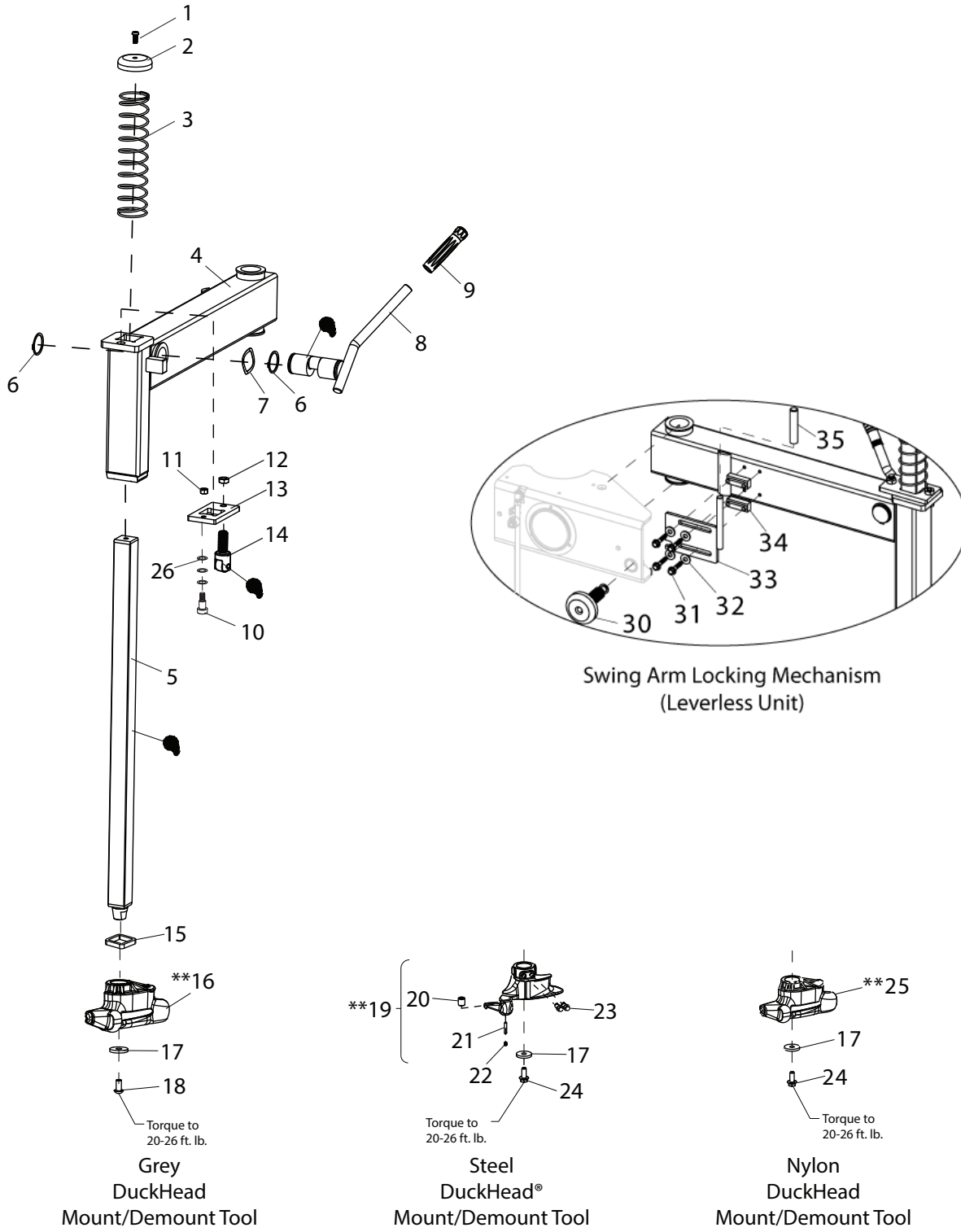
LENGTH	PART NO.	DESCRIPTION
50-ft.	85000375	1/4" ID x 1/2" OD Black Rubber Hose
50-ft.	85000376	1/8" OD x 0.25 Plastic Tube
100-ft.	85609142	3/8" OD x 0.05 Plastic Tube

Swing Arm Assembly

Item	Part No.	Description
1	8183151	5/16-18 x 0.75 SBHCS, Gr.8
2	8181771	Vertical Slide Cap
3	8182028	Vertical Slide Spring
	83031235	Vertical Slide Spring (Leverless)
4	8561085201	Swing Arm Assembly
	8561085202	Swing Arm Assembly (Leverless)
5	85611893	Vertical Slide Shaft
6	8181095	1-5/8 Snap Ring
7	8182371	1-5/8 Dia. Wave Washer
8	85610989	Lock Handle, R.H.
9	8100979	Handle Grip, Black Flex 3/4 I.D.
10	85606344	1/2 x 5/8 Shoulder Screw
11	85610655	3/8-16 Lock Nut
12	8181113	1/2"-13 Jam Nut, Gr. 5
13	85606343	Lock Plate
14	85611540	Cam Roller-Asm
15	8182031	Rubber Bumper
16	8184432	** Duckhead® Mount/Demount Tool Kit (Grey)
17	8182027	7 ga. x .406 ID x 1.28 OD Washer
18	8183055	3/8-16 x 0.750 SBHCS Screw
19	81827881	**Duckhead Mount/Demount Tool Kit (Metal)
20	8182787	0.562 Diameter x 0.515 LG. Roller
21	8182786	5MM x 25MM Dowel Pin
22	8140667	1/4-20 x 1/4 Soc.Hd.Set Scr, Gr.8
23	8182813	3/8-16 x 3/4" Ctr Bore Cap Scr, Gr.8
24	8106302	3/8" Whiz Lock Screw, Gr.5
25	8183061	**Duckhead Mount/Demount Tool Kit (Nylon)
26	85606345	Shim
30	85607820	Adjusting Lock Knob
31	85000317	5/16-18 x 1-1/2 HSWHCS Screw Zinc
32	8107635	5/16" Plain Washer
33	85607814	Lock Assembly
34	85607816	Lock Block
35	70002301	1/2 x 3 Handle Grip

** Accessory Item

Note: Standard and optional mount/demount tools shown.



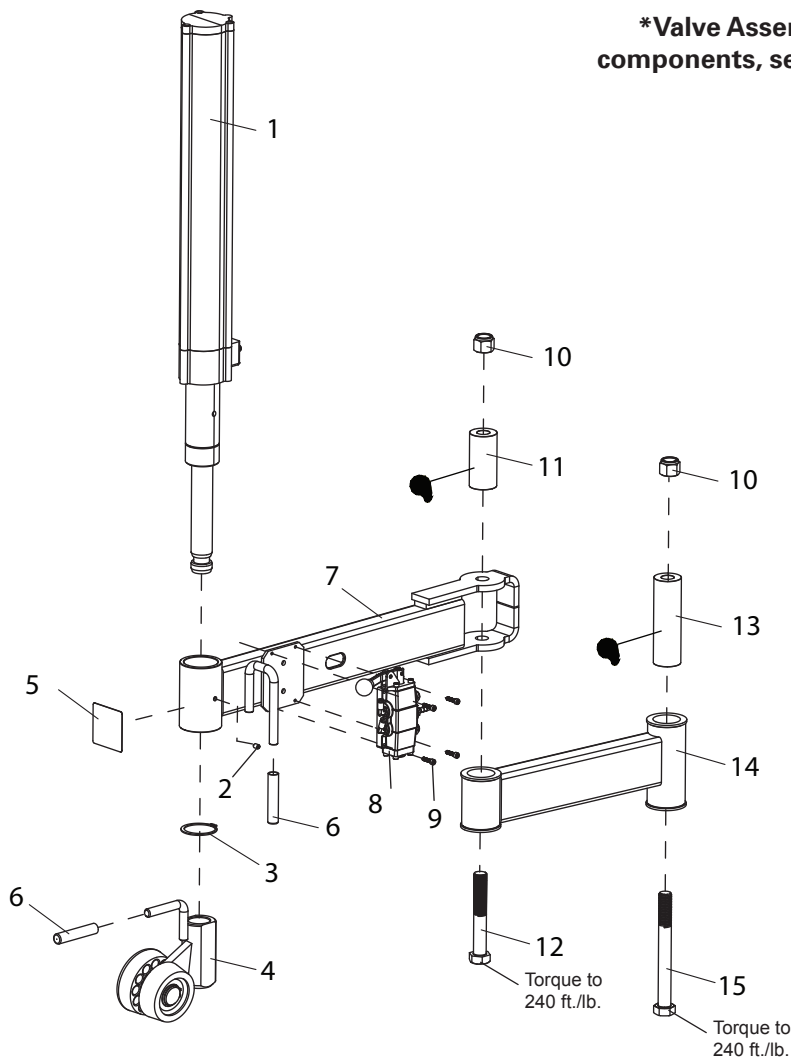
 APPLY GREASE TO THESE LOCATIONS

RoboRoller™ Powered Assist Assembly

Powered Assist

Item	Part No.	Description
1	85608884	2.5" RC, Cylinder Assembly
2	902308	1/4-20 x 3/8 Knurled Cup PT SHSS
3	8183637	2" Ext. Retaining Ring
4	8185598	Aux. Roller Assembly
5	85000204	UP/DOWN Decal
6	7000230	1/2" Rubber Hand Grip
7	85611802	Front Arm Weldment (Black)
8	85611866	*Valve Assembly
9	8182001	10-24 x 3/4 Lg. SHCS, Screw
10	8182016	3/4"-10 Nylon Insert Lock Nut, Gr.5
11	85611823	Pivot Pin
12	8182579	Hex Head Cap Screw
13	8181038	Helper Arm Pivot Pin
14	85611806	Rear Arm Weldment (Black)
15	85610016	3/4-10 x 7 HHCS Screw, Gr.5

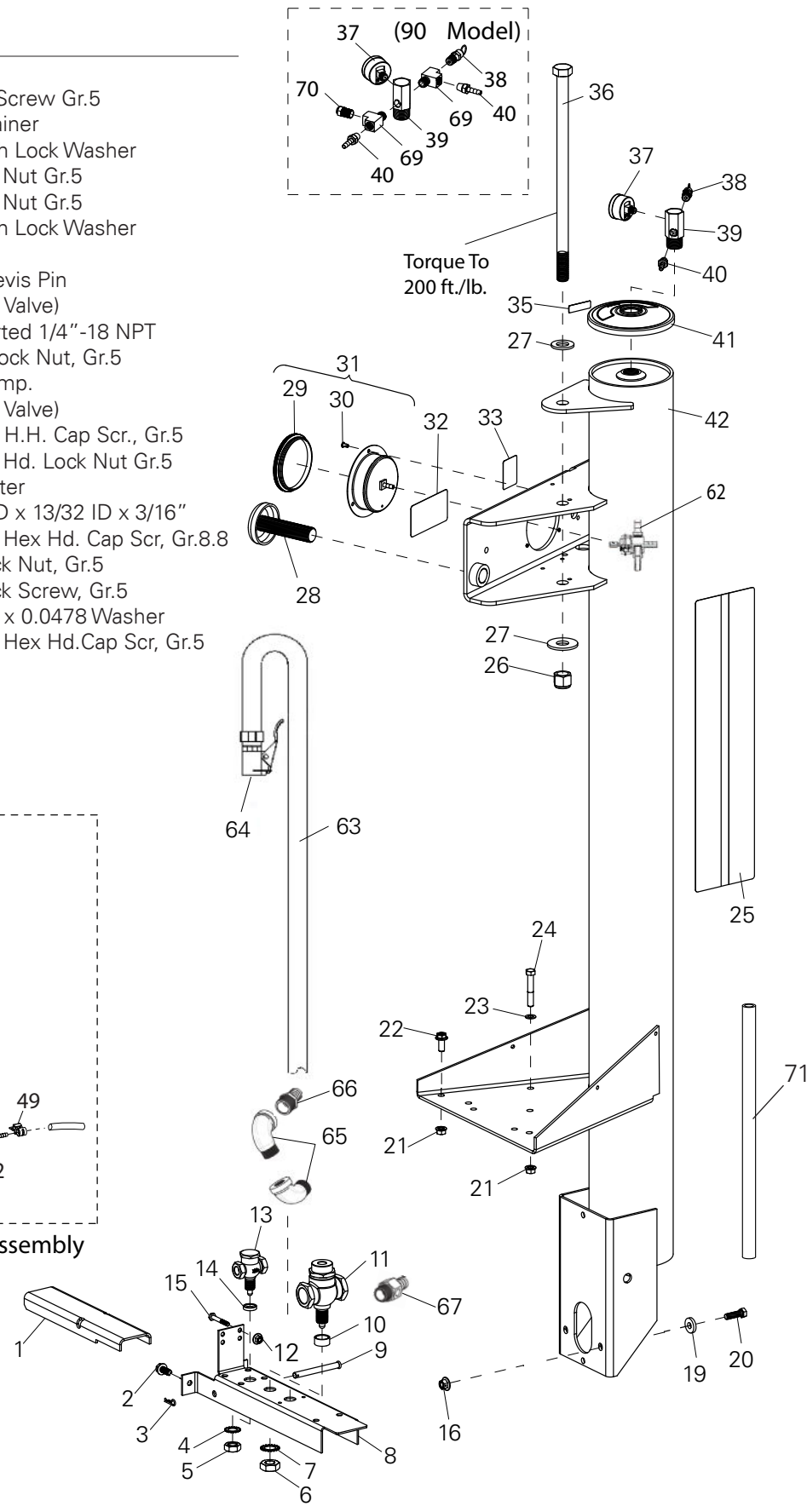
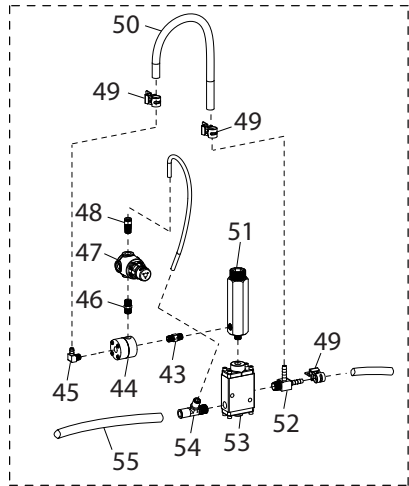
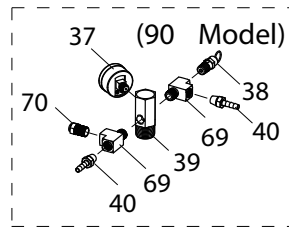
***Valve Assemblies (available only as individual components, see page 16)**



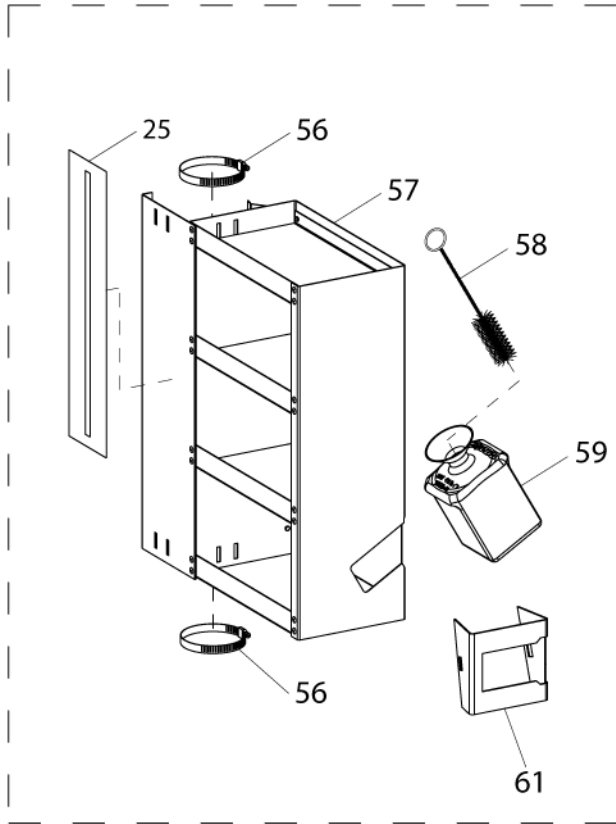
 APPLY GREASE TO THESE LOCATIONS

Inflation Bracket and Tower Assembly

Item	Part No.	Description
1	85613065	Pedal Inflation
2	8102459	3/8" Self Tap Screw Gr.5
3	8107407	Hitch Pin Retainer
4	8104613	5/8" Ext. Tooth Lock Washer
5	8104611	5/8" N.F. Jam Nut Gr.5
6	8104610	3/4" N.F. Jam Nut Gr.5
7	8104612	3/4" Ext. Tooth Lock Washer
8	85613186	Inflation Brkt.
9	8180103	3/8 x 3-1/4 Clevis Pin
10	8104674	Bushing (3/4" Valve)
11	8106298	3/4" Valve Ported 1/4"-18 NPT
12	8143169	1/4-20 Whiz Lock Nut, Gr.5
13	8104600	1/4" Valve Comp.
14	8104673	Bushing (1/4" Valve)
15	8120408	1/4-20 x 1-3/4 H.H. Cap Scr., Gr.5
16	8120424	3/8"-16 Wash Hd. Lock Nut Gr.5
18	85000816	Pressure Limiter
19	8000240	Washer 1" OD x 13/32 ID x 3/16"
20	8107715	3/8-16 x 1-1/4 Hex Hd. Cap Scr, Gr.8.8
21	8106303	3/8" Whiz Lock Nut, Gr.5
22	8106302	3/8" Whiz Lock Screw, Gr.5
23	8101018	0.392 x 0.687 x 0.0478 Washer
24	8181137	3/8-16 x 2-1/4 Hex Hd. Cap Scr, Gr.5
25	85611363	Decal-Wrnrng



Inflation Bracket and Tower Assembly

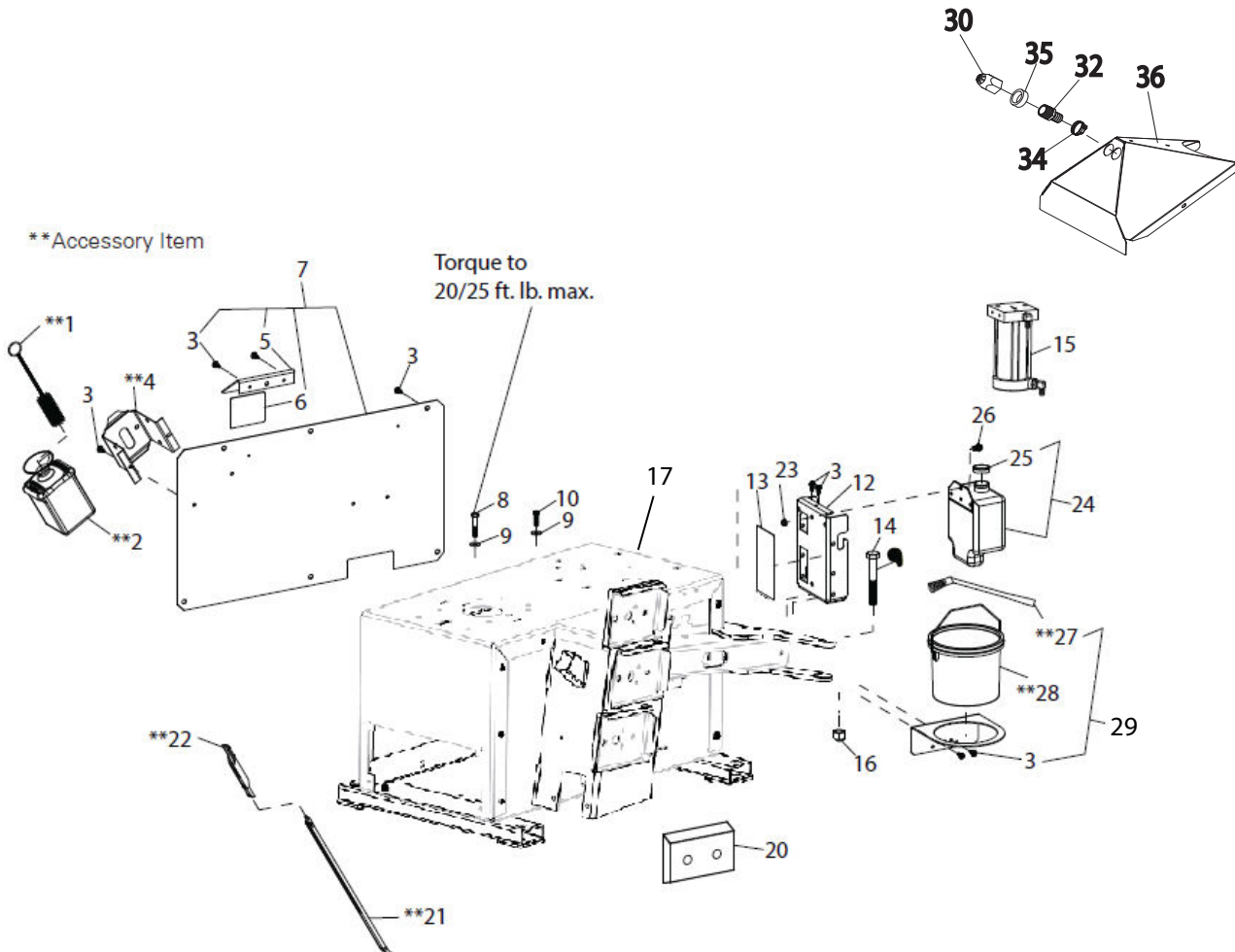


Item	Part No.	Description
26	8182016	3/4"-10 Nylon Insert Lock Nut, Gr.5
27	8100994	3/4 Flat Washer
28	8181114	Adjusting Knob Assy
	85607820	Adjusting Lock Knob (Leverless)
29	8107517	Gauge Lens, Screw On
30	940341	Rivet-Pop, AD64ABS
31	85610709	Flanged Air Gauge w/Fasteners
32	8109888	Inflation Warning Decal
33	8183597	Release Valve Decal
35	8182059	Line Press Gauge Decal
36	85613064	3/4-10 x 13" Hex Hd. Cap Scr, Gr.5
37	8108968	Air Gauge
38	8182599	Safety Valve
39	8183434	Manifold/Gauge
40	8000378	1/4" Brass St. Fitting
41	8182458	Plastic Cap (Tower)
42	85613063	Tower/Air Receiver
43	8109471	1/8" Brass Hex Nipple
44	8109468	Pressure Repeater
45	8110497	Male Elbow 1/8 NPT x 1/4 Hose
46	8109472	1/8" Inline Filter
47	8111083	Regulator
48	8182035	1/8 NPT x 1/4 Tube Male St. Fit.
49	85606362	13mm Spring Hose Clamp
50	8103649	ø1/4 x 12" Hose
51	8110496	Volumn Chamber
52	8110325	1/4" NPT Male Run Tee
53	8109466	Piloted Valve
54	8111255	1/4 NPT x 3/8 x 1/4 Spl Tee
55	8184459	3/8 x 25" Black Rubber Hose
56	8182221	6" Hose Clamp
57	85610105	Accessory Box Assembly
58	8000491	Lube Applicator
59	8106259	Lube Bottle (Red)
61	8182167	Lube Bottle Brkt-Red
	8182809	Lube Bottle Brkt-Red (5050)
62	8183502	Bleed Valve manifold Assy.
63	8182052	Inflation Hose w/Air Chuck
64	8410419	Air Chuck
65	85000103	3/4" 90° Street Elbow
66	8104573	3/4" Straight Fitting
67	8182020	3/4" NPT x 3/4 Hose
68	85611138	R.I.M. Decal
69	871101642	1/4 NPTMX, 1/4F Tee Fitting
70	85612036	1/4 NPTMX x 6mm
71	8181993	3/4x15" 300psi Hose

Chassis System

Item	Part No.	Description	Item	Part No.	Description
**1	80004911	Lube Applicator	19	8182088	5/16-18 x 1-1/4 TPHST Screw, Gr.5
**2	81062591	Lube Bottle (Red)	20	8181855	B.L. Pad
3	8106301	1/4" Hex Hd Self Tap Screw, Gr.5	**21	8181354	Bead Lifting Tool (Optional on Lever-less Unit)
**4	8182809	Lube Bottle Bracket	**22	85000783	Lift Tool Bootie Kit, Pkg of 10
5	8182811	Inflation Pedal Cover	23	924724	312-18 Hex Flange Nut
6	8181285	Inflation Pedal Decal	24	856104041	Tank Reservoir w/Cap
7	85607585	Metal Side Panel	25	81856301	Tank Reservoir Cap, Red Push-On St
8	8182040	M10-1.5 x 55MM Hex Hd.Cap Scr, Gr.8.8	8561040601		Tank Reservoir Cap Black Screw-On Style
9	8301032	3/8 Flat Washer, Zinc Plate	26	8183452	5/16-18x5/8 HWHCS Screw
10	8107715	3/8-16 x 1-1/4 Hex Hd. Cap Scr, Gr.5	**27	85000850	Tire Paste Brush
11	8181964	Plastic Accessory Tray	**28	81837101	Universal Mounting Paste
	85608840	Plastic Accessory Tray for Air Nozzle	**29	85009048	Lube Bucket Bracket & Brush Kit
12	8183770	Lubricator Bracket	30	85608894	Inflation Nozzle Cone
13	8183778	Lubrication Notice Decal	31	85611051	Washer
14	8182579	3/4 x 5 Grade 5 bolt	32	8104573	3/4" Straight Fitting
15	85612239	Water Separator Assy (Air Motor Machines Only)	33	85610108	Plug, 1" Dia.
16	8182016	5/8-11 Hex Nut	34	8101346	Clamp-Hose, 1/2 X 1-1/4
17	85611555	Chassis	35	85611051	Bushing-Nylon Dia. 1.5
			36	85610631	Cover Assembly

**Accessory

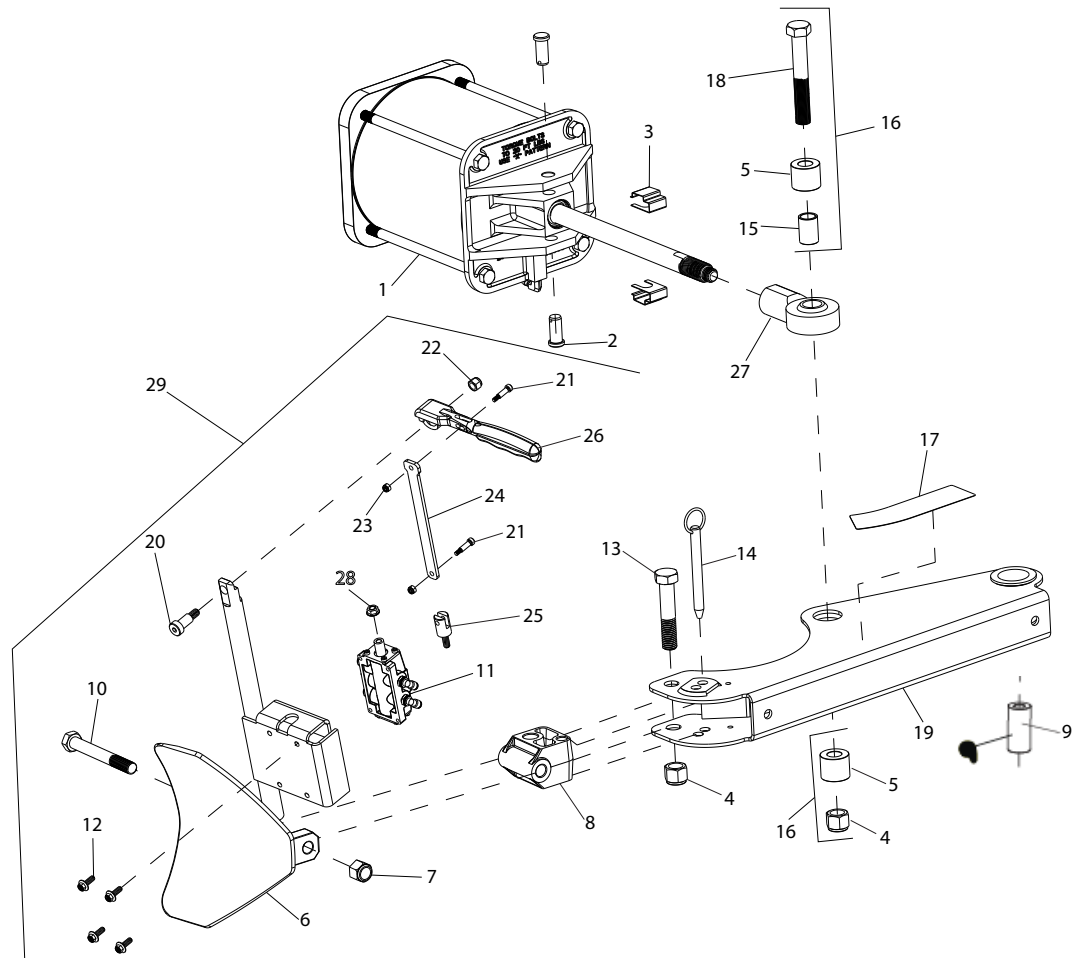


APPLY GREASE TO THESE LOCATIONS

BL Arm Assembly

Item	Part No.	Description	Item	Part No.	Description
1	81833126	B.L. Cylinder	16	85610515	Pivot Assembly
2	8181949	5/8 x 1-3/8 Clevis Pin	17	8181970	Bead Loosener Decal
3	8181912	Clevis Clip	18	8182579	3/4-10x5" Bolt
4	8182016	3/4"-10 Nylon Insert Lock Nut, Gr.5	19	85612993	B.L. Arm
5	85608567	Spacer	20	81855583	Shoulder Screw (sold as 3 pack)
6	85608038	B.L. Shoe	21	925757	10/24 x 1" HHCS Screw
7	8182043	5/8-11 Nylon Insert Lock Nut Gr.5	22	8301035	3/8-16 Hex Nyloc Nut
8	8181951	B.L. Shoe Pivot Bracket	23	8182682	10-24 Nylon Insert Lock Nut Gr.5
9	85613000	Pivot Pin	24	85611517	Link-Hndl,B/L
10	8182011	5/8-11 x 5" Hex Hd Cap Scr, Gr.5	25	85611516	Coupling - Hndl, B/L
*11		see p.16 B.L. Arm Valve	26	85610228	B.L. Lever Handle
12	902189	1/4-20 x.504 HHCS	27	85608569	Heim Joint
13	8182009	3/4-10 x 3 3/4" HHCS	28	8182178	Nut-Hex, 5/16-18, Whz Lck
14	8120326	ø1/2" Hitch Pin	29	85608287	BL Shoe Assembly
15	85608566	Spacer			

***Valve Assemblies (available only as individual components, see page 16)**



Foot Pedal Assemblies

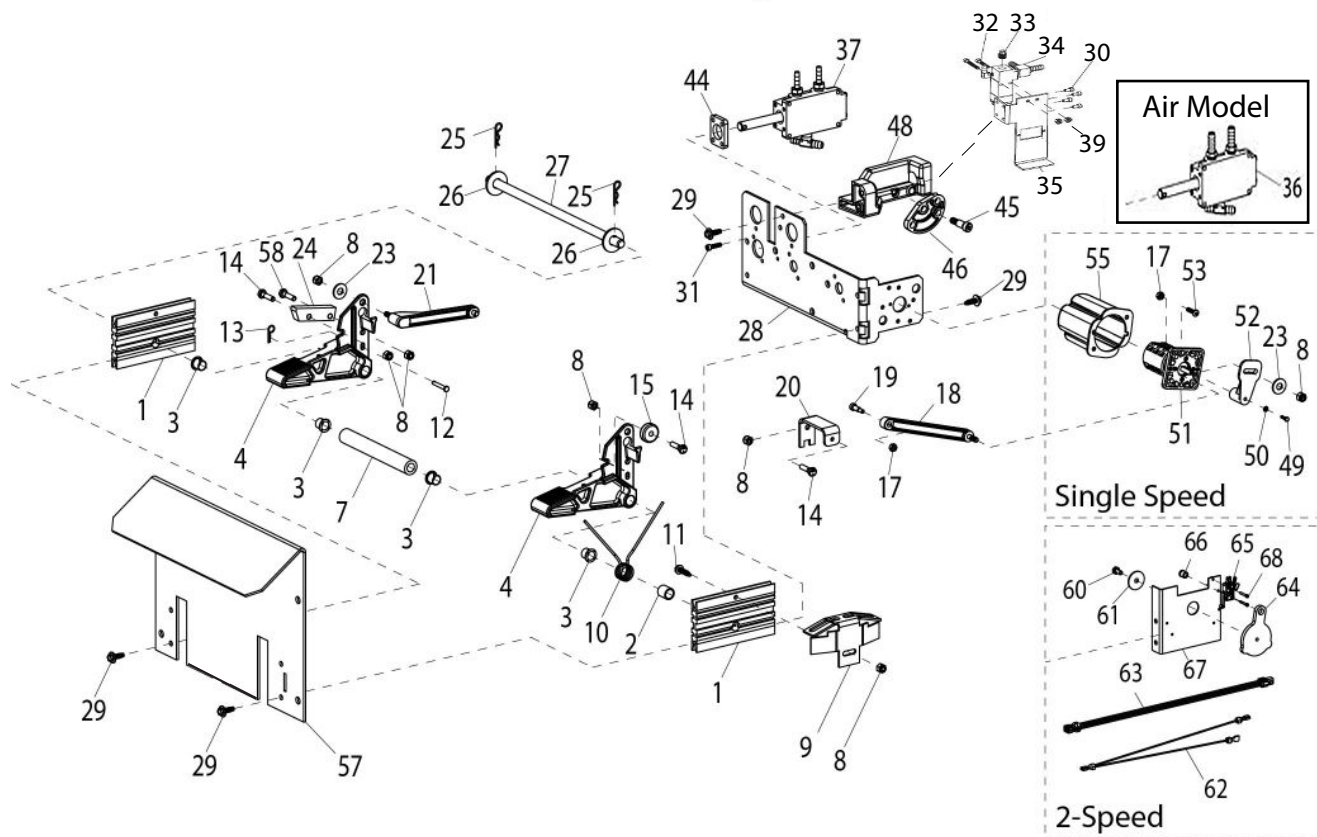
Electric Model Foot Pedal Assembly

Item	Part No.	Description	Item	Part No.	Description
1	8181918	Valve Brkt. Spacer Bar	50	8301072	#6 Internal Tooth Lk Washer
2	8181872	Torsion Spring Sleeve	51	8182958	Reversing Switch, Kit
3	8181948	1/2" Nylinder Bearing	52	8181728	Switch Actuator Lever
4	8181675	Standard Pedal	53	8181983	10-24 x 5/8 BHSCS, Gr.8
5	8182327	Pedal Spacer	55	8181959	Cover-Switch
6	8181911	Pedal Spacer	57	8561103701	Guard-Foot Pedal
7	8182358	Pedal Spacer	58	8106455	Clevis Pin
8	8181369	1/4-20 Lock Nut, Nyl. Ins. Gr.5	59	8103737	Release Valve
9	8182670	Spring Stop Bracket	60	902189	1/4-20 x.504 HHCS
10	8181707	Torsion Spring	61	8111032	1/4" Heavy Fender Washer
11	8104945	1/4 x 1 HWHSTC, Gr.5	62	85609741	2-Speed, 2-Wire Harness
12	8181977	3/16" x 1-1/2" Clevis Pin	63	85609742	2-Speed, 4-Wire Harness
13	8120469	Hair Pin Cotter	64	85609743	Disk Switch
14	8181984	1/4-20 x 1" Hx.Hd.Cp.Scr., Gr.5	65	85609746	Foot Pedal Switch
15	8181923	Stop Washer	66	85000357	#4-40 Nut-Hex, Nylk
16	8181708	Pedal Extension Spring	67	85609917	2-Speed, Switch Plate
17	8182682	10-24 Nylon Insert Lock Nut Gr.5	68	95000064	#4-40 x 3/4 Lg. SHC Screw
18	8181699	Lever Assembly - Switch	69	8181982	Screw, -HHCS,M3X12
19	8182743	10-24 x 3/8 SHCSS Gr.8			
20	818236302	Ele- Switch-Ext-Bracket			
21	8501003801	Cam Lever Follower			
22	85611564	Pedal Shaft			
23	8107635	5/16" Flat Washer			
24	85608197	Pedal Stop			
25	8107419	Hair Pin Cotter			
26	8301121	Washer			
27	8183398	Pedal Shaft			
28	85009985	Valve Mounting Bracket			
29	8106301	1/4" Hex Hd Self Tap Screw, Gr.5			
30	8181989	10-24 x 3/8 SHCS, Gr.8			
31	8182001	10-24 x 3/4 SHCS			
32	922585	Screw, SHCS 10-24 X 1 1/2			
33	85611035	Plug-1/8 NPT Sq Head			
34	85610869	Oil Injector Ass'y			
35	85610870	Bracket-Oil Injector			
36	see p16	Valve TT Rotation Pedal			
37	see p.16	Valve, TT Clamp Pedal			
39	see p16	Valve BL Pedal			
40	85611562	Valve Bar Spacer			
41	85611561	Valve Bar spacer			
42	85611559	Foot Pedal Guard			
43	85611560	Valve Bracket			
44	85009982	Spacer-Valve, Clamp, TT			
45	8301537	5/16-18 x 1/2 SHSHS Screw			
46	85608195	Pivot Link			
47	8184675	Oil Injector Assembly			
48	85608560	Block-Lower Stop Pedal			
49	8103737	Release Valve			

***Valve Assemblies (available only as individual components, see page 16)**

**Accessory Item

Foot Pedal Assembly



BL Pedal Assembly

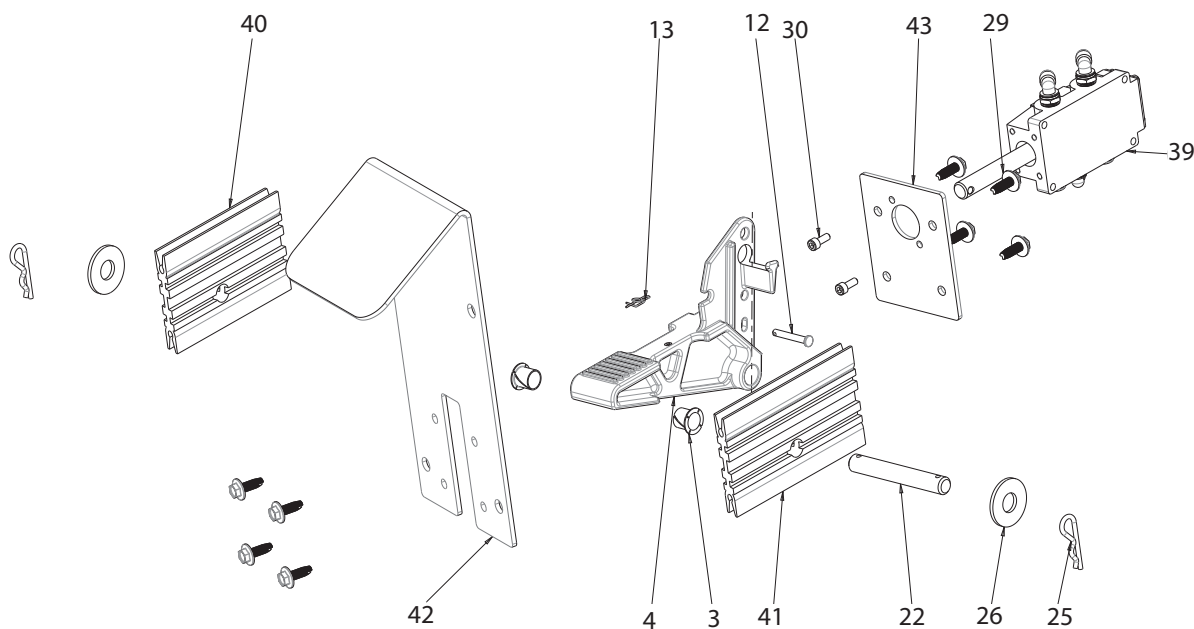
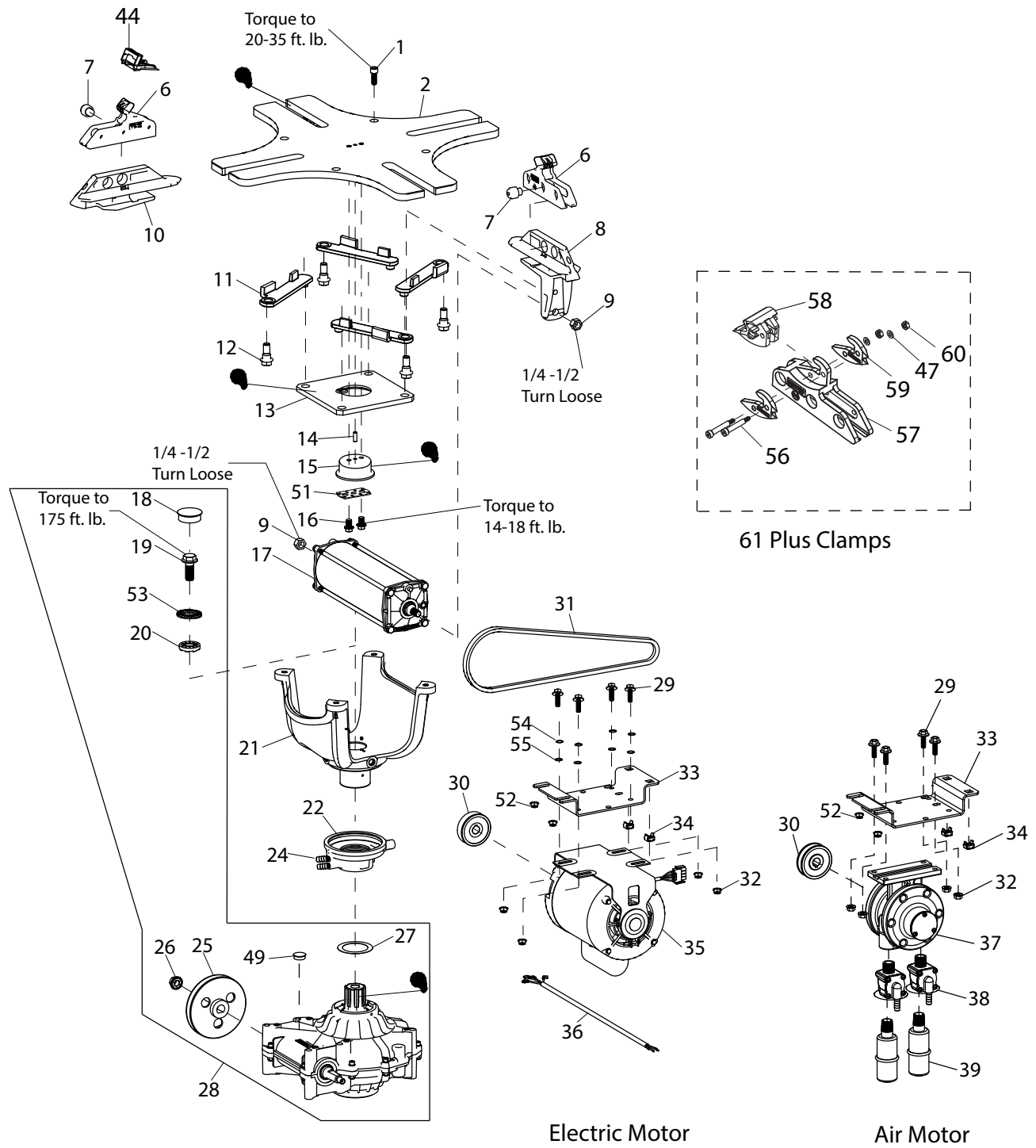


Table Top and Shaft Housing Assembly

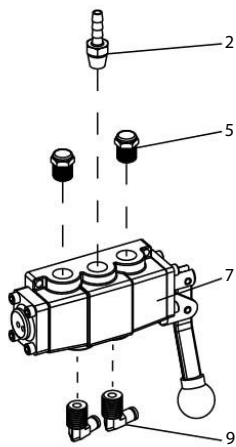
Item	Part No.	Description	Item	Part No.	Description
1	8181929	3/8-16 x 1", Gr.8 Skt. Hd. Cap Scr.	37	8181190	Air Motor, Gast. 6AM
2	8561105301	Table Top Plate W/O Jet Holes	38	85606398	Exhaust Valve
6	8184126EX	Adjustable Rim Clamp	39	8181206	1/2" NPT Muffler
7	81822501	Adj. Clamp Plunger/Spring Assy.	**44	8183604	Bootie Kit, Rim Clamp, Pkg of 10
8	8182248	Carrier/Cover - Cylinder End	47	8301805	#10 Washer
9	8101039	1/2" Lock Nut, Gr.5	49	85610108	Transmission Hole Plug
10	8182249	Carrier/Cover - Clamp Adj.	51	85610717	Retainer Bracket
11	85610388	Pivot Link W/C	52	8106303	3/8-16 Hex Nut LK,Whz,Znc
12	8182279	Adj. Clamp Link Bolt	53	85611049	5/8 M16 Lckng Pr Washer
13	8181731	Table Top Pivot Plate	54	8181981	5/16 ID Wave Washer
14	8183476	ø1/4" x 3/4" Roll Pin	55	85611576	5/16 Flat Washer
15	8181733	Pivot Block	56	85000610	1/4 x 1-1/4 x #10-24 Shoulder Screw
16	85610716	5/16-18 x 5/8" Flange Whiz-lock Scr.	57	8560715901	3-position Laminated Clamp Plus
†17	8182613	Table Top Cylinder Assembly	58	85611029	Clamp Grip
18	8182627	1-5/8" Dia. Cap Plug	59	8560716001	Laminated Clamp Plus Grip
19	85611050	Screw-SHCS,M16x40,GR12.9	60	85611338	10/24 UNC Reversible Hex Lock Nut
20	8182979	ø16mm Molded Washer	61	85611033	Clamp Plus
21	8181990	Spider Assembly			
22	8182619	Rotary Coupling Assembly			
24	8104844	Fitting-1/8 NPTM X 1/4 Hose			
25	85607708	Transmission Pulley (4-hole)			
26	8140567	1/2-13, Hex. Whiz-lock Nut pre-2012			
27	8183156	ø2" X ø2 3/4" x .010 Washer			
28	85608497	Transmission Kit			
29	85611574	Bolt-1/4-20, 5/16 Sckt Shldr			
30	8184674	Motor Pulley			
	85609750	Motor Pulley (2-Speed Motor)			
31	85611409	Motor Belt, CGGD			
32	85611575	1/4-20 ,Flange Top Lock Nut			
33	85609921	Motor Mounting Bracket			
34	8143044	Tinnerman Sq. Captive Nut 3/8-16			
35	8184691	115V Electric Motor			
	85000825	220V, 50/60Hz, 2HP, 1 Phase Electric			
	85610405	220V, 50/60Hz, 2-Speed Electric			
36	8184562	115V 4-wire w/plug Motor Cable Assy			
	8181511	220V 4-wire Motor Cable Assy			
	85610389	115V 2-speed Motor Cable Assy			
	85610438	220V 2-speed Motor Cable Assy			

†Cylinder Assemblies

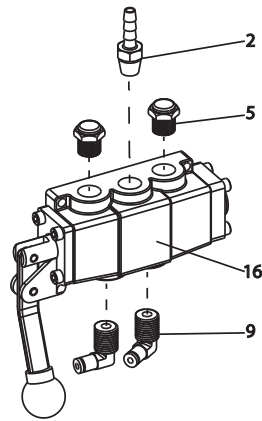
**Accessory Item



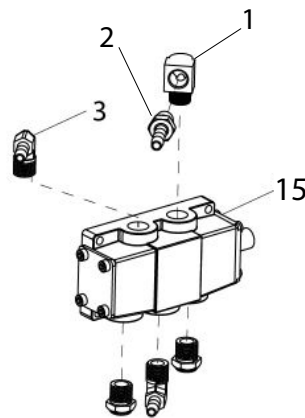
Valve Assemblies



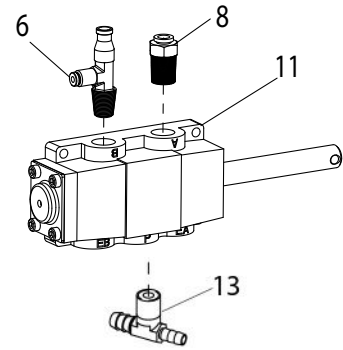
**Robo-Arm®
Valve Assembly**



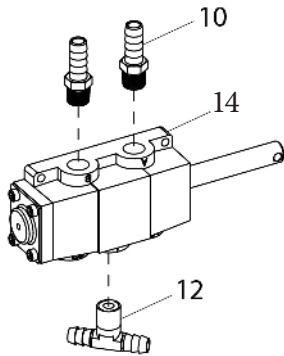
**RoboRoller™
Valve Assembly**



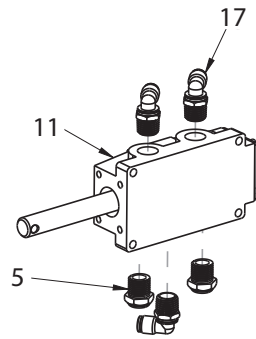
**Bead Loosener Arm
Valve Assembly**



**Table Top Clamp
Pedal
Valve Assembly**



**Air Motor Pedal
Valve Assembly**

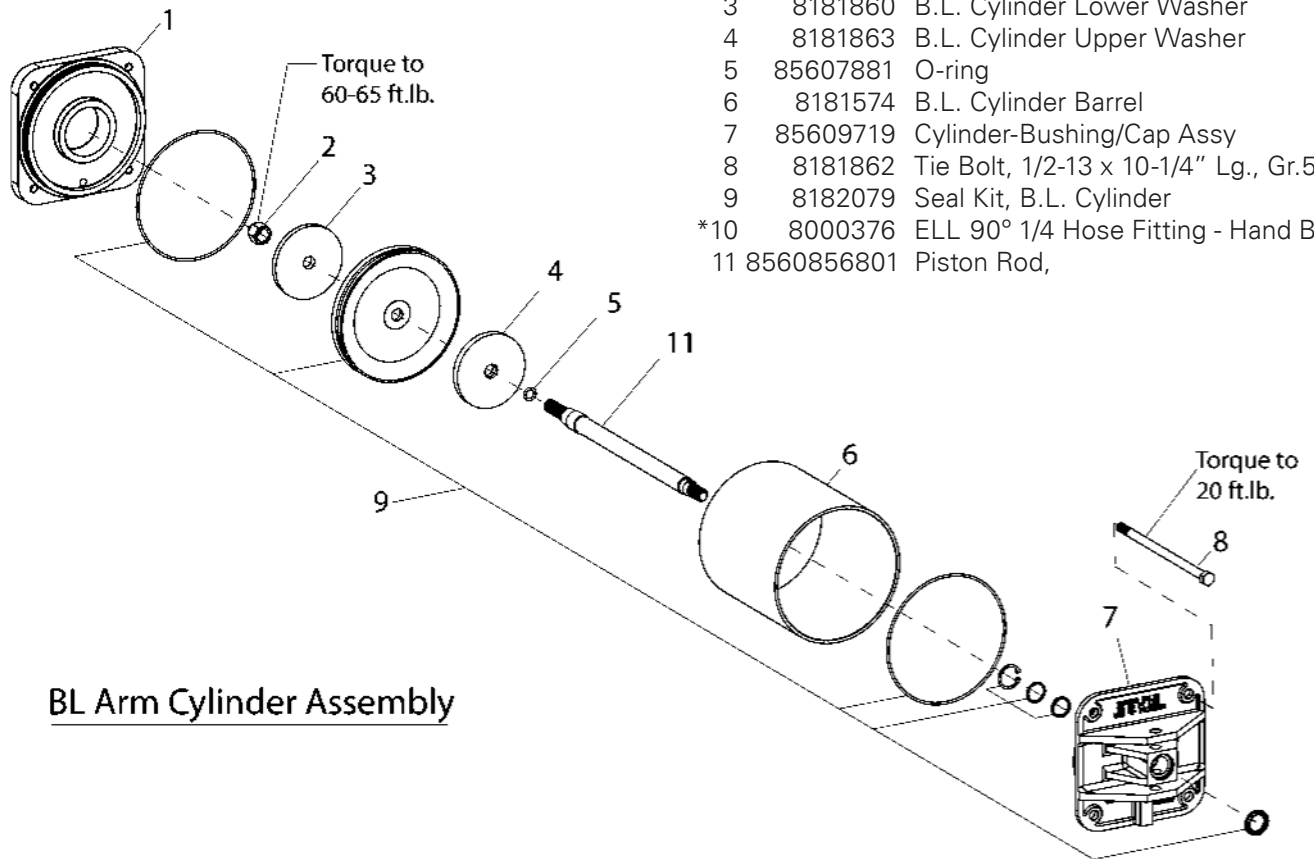


**BL Pedal
Valve Assembly**

Item	Part No.	Description
1	8000372	1/4 NPT, 90° St. ELL Fitting
2	8000378	1/4" Brass St. Fitting
3	8000376	ELL 90° 1/4 Hose Fitting
5	85607855	1/4 NPT Muffler, Small
6	85612035	Fitting Tee 1/4 NPT x 1/8 x 1/4 PTC
7	8185585	3 Position Valve
8	8181987	Fitting Straight 1/4 NPT x 1/4 PTC
9	85612818	90° Elbow 1/4 NPT x 1/8" Fitting
10	8101898	St. 1/4" NPT 3/8" Hose Fitting
11	8184369	4-Way w/Pull Pin Valve
12	8184467	1/4" NPT x 3/8 BRB x 3/8B Tee Fitting
13	8184469	1/4" NPT x 3/8 BRB x 1/4B Tee Fitting
14	81843693A	4-Way w/Pull Pin Valve
15	8184878	4-way Valve, Pedal Operated
16	85611865	3 Position Valve
17	85611120	Fitting-90 Elbow PTC

Cylinder Assemblies

Item	Part No.	Description
1	8183310	B.L. Cylinder Bottom Cap
2	8182016	3/4"-10 Nylon Insert Nut, Gr.5
3	8181860	B.L. Cylinder Lower Washer
4	8181863	B.L. Cylinder Upper Washer
5	85607881	O-ring
6	8181574	B.L. Cylinder Barrel
7	85609719	Cylinder-Bushing/Cap Assy
8	8181862	Tie Bolt, 1/2-13 x 10-1/4" Lg., Gr.5
9	8182079	Seal Kit, B.L. Cylinder
*10	8000376	ELL 90° 1/4 Hose Fitting - Hand B/L
11	8560856801	Piston Rod,



BL Arm Cylinder Assembly

Item	Part No.	Description
1	8181183	5/16-18 Nylon Insert Lock Nut Gr.5
2	8181622	Cylinder Bottom Cap
3	8182719	1/2-13 Locking Jam Nut, Gr.5
4	8183772	O-ring
5	8181629	Shaft, Tabletop Cyl.
6	8181627	Sleeve, Cylinder
7	8181620	Cylinder Top Cap
8	8181633	Tie Bolt, Tabletop Cylinder
9	8183811	Table Top Cylinder Seal Kit

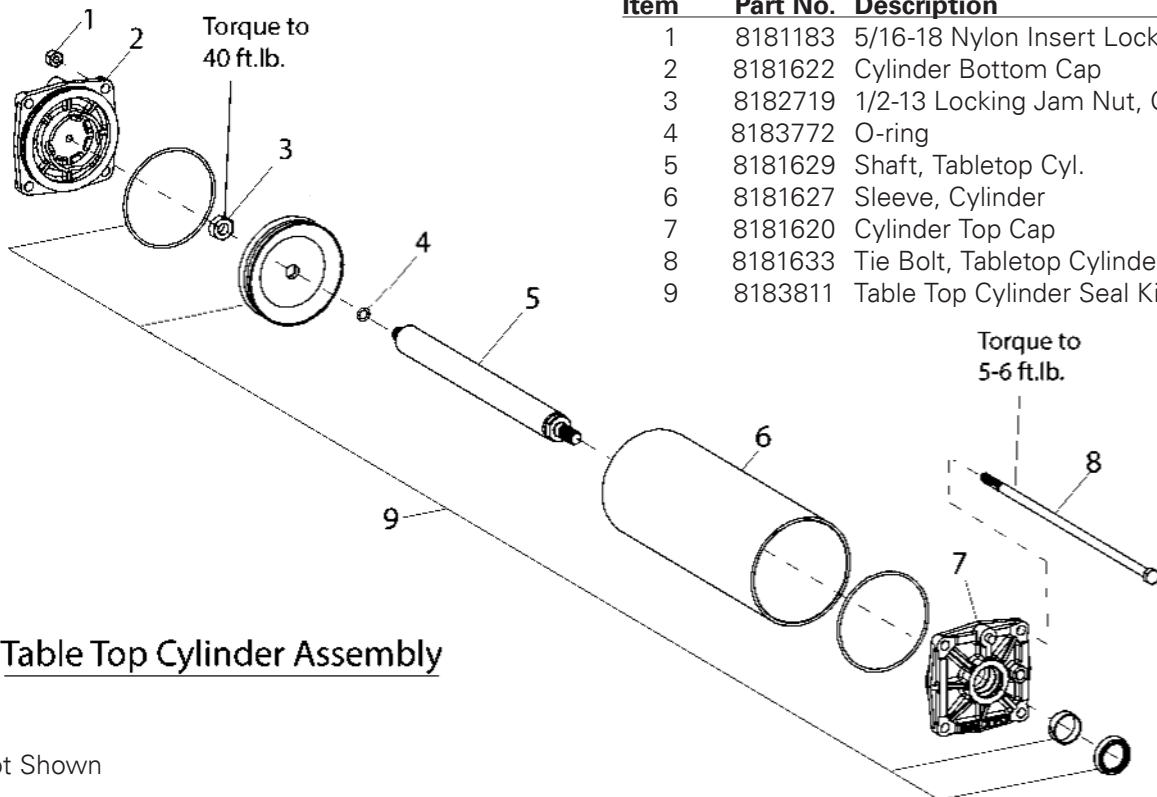
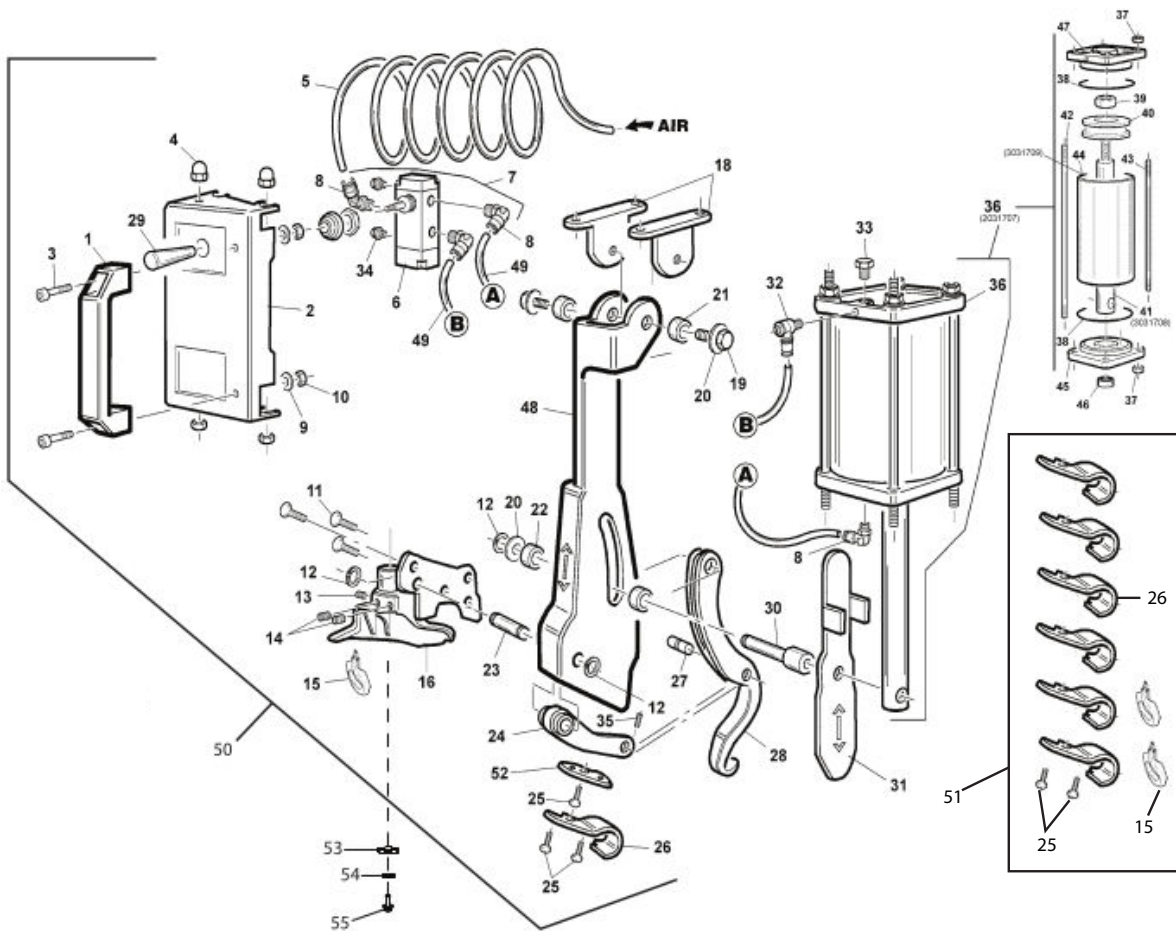


Table Top Cylinder Assembly

*Not Shown

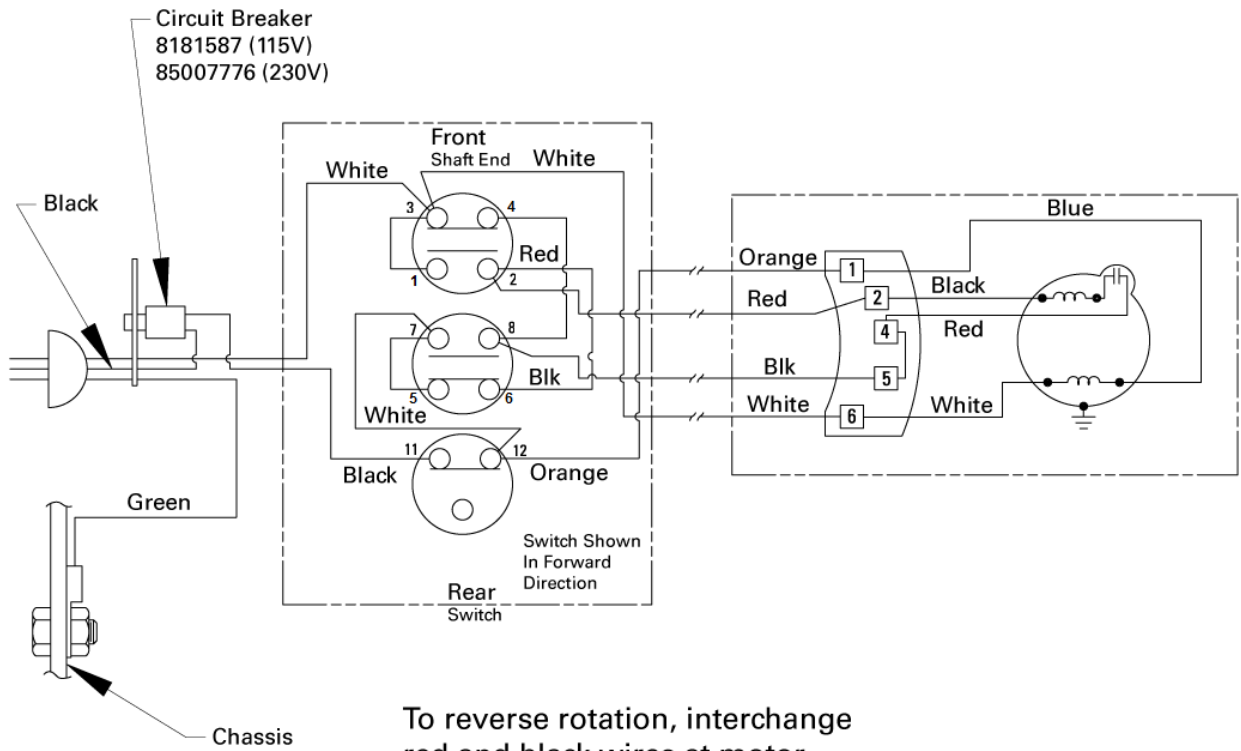
Leverless Bead Lifter



Item	Part No.	Description	Item	Part No.	Description
1	84297851	Handle	29	83010284	D.14 x 45 M5 Control Handle
2	87019215	Valve Box	30	83019211	Cylinder Pin
3	84399954	8 x 20 Screw	31	83019561	Support Plate
4	84395374	M8 Nut	32	84194004	MR 41 6 M6 Union
5	83030571	6 x 4 Spiral Hose, L=1500	33	84199161	1/8" Plug
6	84198285	5-way Valve	34	84199610	1/8" Silencer
7	82006996	Valve	35	84399957	6 x 8 Screw
8	84198618	1/8" Union	36	82031707	Cylinder Unit
9	84399829	8 (8, 4 x 16 x 1,5) Washer	37	84399976	Nut M8
10	84399900	M8 Self-locking Nut	38	84298822	O-ring D.68, 26 x 3, 53
11	84393957	0 x 12 Screw	39	84399865	Self-locking Nut M12
12	84399864	D.12 Seeger Ring	40	84198856	D.75 Piston
13	84395530	12 x 2 Screw	41	83031708	Cylinder Shaft
14	84393346	Screw	42	83019208	8 x 1, 25 x 180 Special Screw
15	83019305NE	Back Slide	43	83019204	M8 X 1, 25 x 164 Special Screw
16	83033830	Touchless Mounting Tool	44	83031709	Cylinder Liner L=125
18	83019202	Connection Plate	45	83015024	Flange
19	84399434	12 x 20 Screw	46	83199601	Scraper
20	84398637	ID 12 x 21 x 2, 5 Washer	47	83019467	D.75 SO Side Hole M6 Back Flange
21	83017334	12/18/8, 2 Bush	48	87019199	Tool Holder
22	83017302	12/18/6, 5 Ferrule	49	83019959	6 x 6 Hose L=240
23	83019210	Pin - 54mm long	50	89243318	Leverless Device
24	83019214	Connection Rod	51	89233409	Leverless Bootie Kit
25	84393753	5 x 8 Screw	52	83031595	Threaded Tab
26	83033278NE	Front Slide	53	84395804	2 x 35 x 5, G Type 14, Washer
27	83019212	Tool Pin - 26mm long	54	84395805	2 x 21 x 4, C Type 10, Washer
28	83019213	Touchless Tool	55	8106302	3/8-16 UNC HSWF Screw, L=.875"

Electrical Schematics

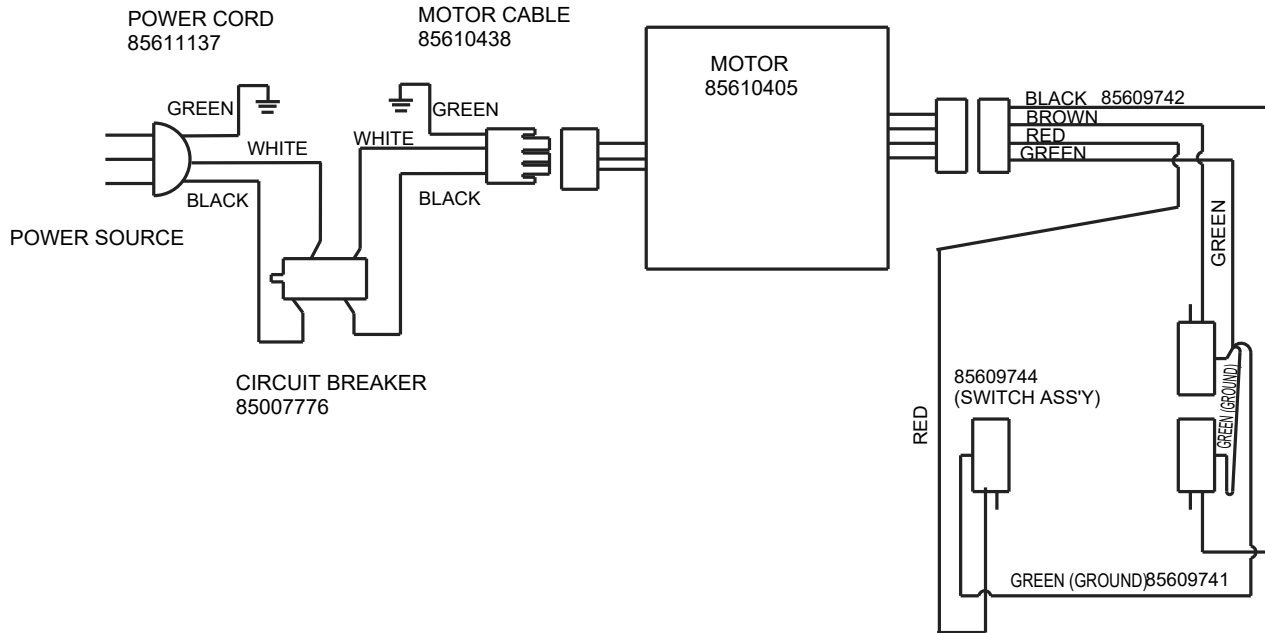
Domestic and C.S.A. (Single-Speed Motors)



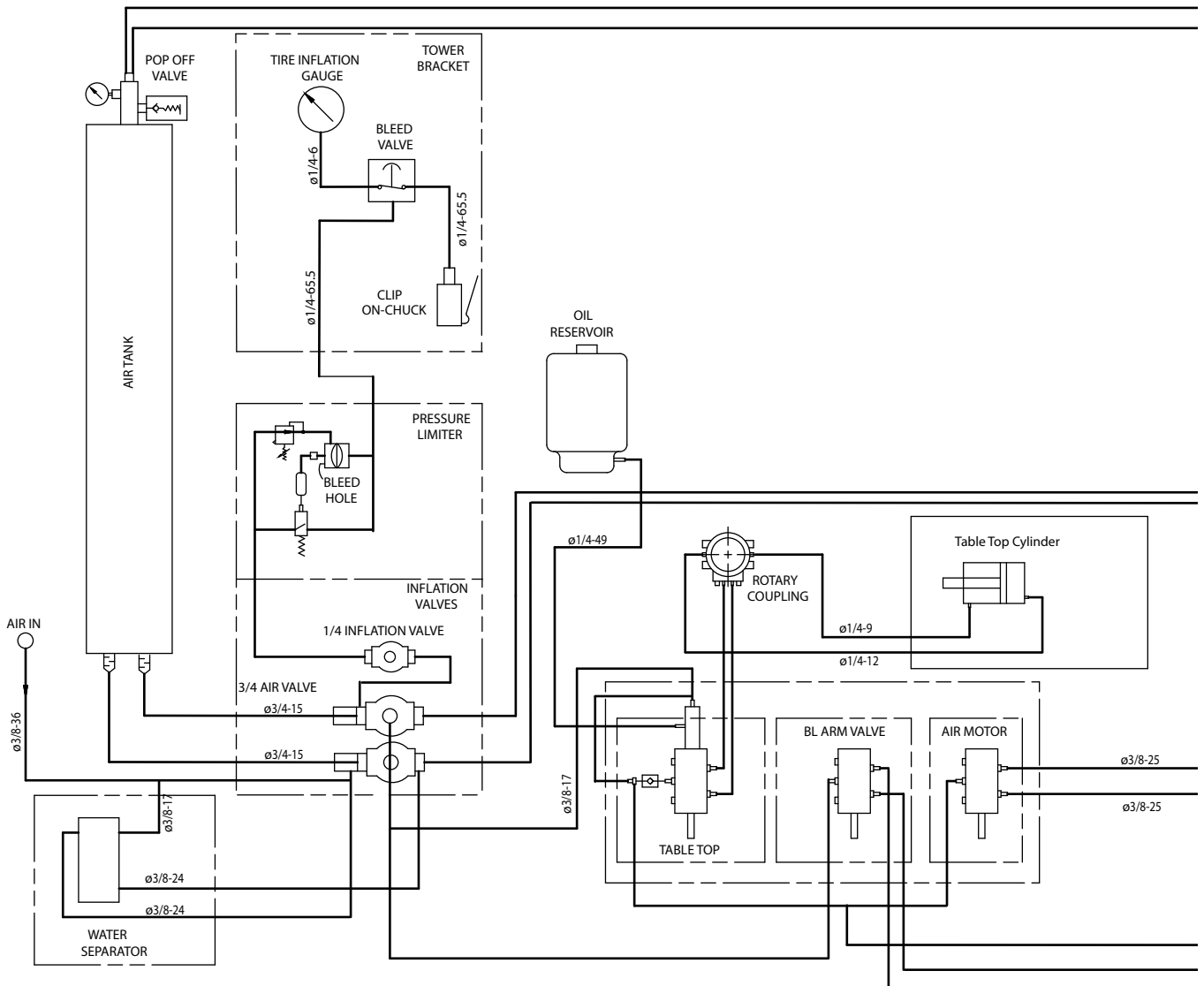
Power Cords

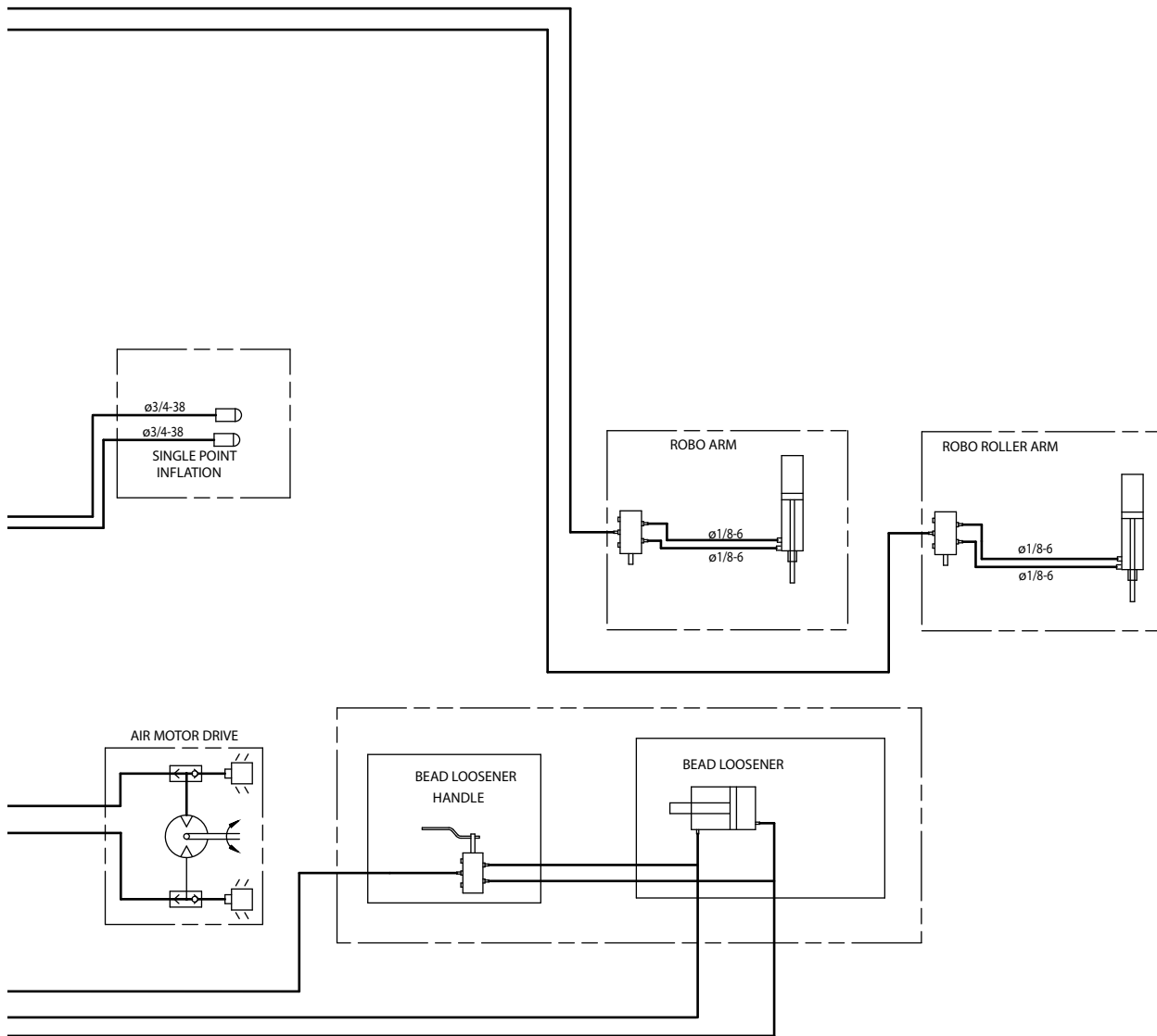
Part No.	Description
85610349	115V
85611137	220V,

220V Motor (2-Speed)



Pneumatic Diagram





Note: All possible tire changer options are displayed. Your tire changer will include the options specified by the model number.

Notes

Notes

Rim Clamp® Tire Changer

All-Air Unit Compressed Air Requirements

COATS® Rim Clamp® tire changers that are powered entirely by air (no electric motor) require a single compressed air power source. Refer to the table below for exact specifications.

Tire Changer Model	Compressor Size	Capable of
All	5 HP	14-15 SCFM at 150 PSI

Oil Maintenance

The oil injector (on units so equipped) typically require annual service. The oil level in the oil reservoir tank should be checked regularly.

1. Add oil to the oil reservoir tank if the fluid level in the tank is at the “add” mark. Remove cap from the oil reservoir tank and add Chevron Regal® R & O 32 oil to the “full” mark. Replace the cap and clean up any spilled oil.

Important: If the hose between the reservoir and injector is ever empty of oil, an air lock will form. After filling the reservoir tank, the line must be bled of air at the injector connection as follows:

- a. Remove the side panel and locate the oil injector.
- b. Loosen the bleeder plug on top of the injection assembly until oil drips from the plug.
- c. Retighten bleeder plug.
- d. Cycle the clamp valve a few times checking for oil and air leaks.
- e. Test the machine for full function before returning the machine to operation.

Air Gauge Check and Recalibration

1. Inflate a standard 15” passenger car tire/wheel assembly to 32 PSI. Use a high quality stick-type pressure gauge to verify the pressure. Attach the tire changer’s inflation hose to the valve stem and check the pressure reading on the air gauge. If it does not read 32 PSI, recalibrate the gauge.

2. Remove the screw-on lens. Loosen the 2 screws on the face of the gauge. Loosen them just enough so that the gauge face moves. Do not remove the screws.

3. Rotate the gauge face until the 32 PSI mark is aligned with the gauge needle. Tighten the 2 screws and replace the lens.

Danger, Warning, Caution, and Instructional Decals

Always make the cleaning of these important decals a part of your regular maintenance routine. If they are damaged or illegible, replace them immediately. Your safety, and the safety of others is involved!

Regal® is a trademark of Chevron Products Company