

coats



Maxx N²10 Two Post Lifts

We build durable 10,000 lb Two Post Lifts

Designed to be as durable, safe, and power efficient as possible, Maxx Two Post Lifts are essential for your technicians to complete tire and under vehicle services.



Shown 4TV21NSR1

An extra steel tube in each column makes the lift almost **20% heavier**, adding weight and structural integrity

Reliable power for your lift

Every every Maxx Two Post Lift is powered by a **USA-made** Bucher pump and motor built to deliver reliable hydraulic pressure. **It's efficient and dependable, designed to keep your shop moving for years.**

Lift with the right adapters

You get all the basics out of the box with every N210 Two Post Lift, including four double screw pad adapters, two sliding arm adapters, and eight nickel plated height adapters so you can get right to work.

10,000 lb Capacity

Flexible Configurations

We offer our 10,000lb capacity Maxx Two Post Lifts in asymmetric and symmetric configurations with standard and extended height options.

Flexmetric Lifts Give the Best of Both Worlds

Flexmetric Two Post Lifts are versatile with “2N1” offset adjustable arms that let techs load vehicles either symmetrically or asymmetrically—whichever is appropriate for the vehicle. The asymmetric arms extend to hard-to-reach lift points and operate without obstructing car doors for jobs that require cabin access.

Symmetric Lifts for Extra Stability

With a wider drive through clearance, symmetric lifts are simple to operate because the four, equally long lifting arms center the vehicle in the bay, making these lifts the most stable solution for shops that regularly lift trucks, SUVs, and other passenger vehicles with longer wheelbases.

Durability and Confidence you can work under

We build lifts that last longer, perform better, and cost less to operate

We spec the highest quality materials for all Maxx 2 Post Lifts. The reinforced structural components, premium USA made power units, and corrosion-resistant finishes of Maxx 2 Post Lifts are designed to last, withstand debris and corrosion, and require minimal maintenance.

Built for Safety

Every Maxx 2 Post lift is certified by the only accredited program in North America that independently verifies whether a lift complies with all industry safety and operational standards, such as structural integrity, mechanical safety systems, hydraulic and electrical systems, and load testing.



Lift Inspections by the Coats Connect Service Network

Coats Service Network Lift Inspectors are tested and qualified, to inspect ANY brand of lift, using the ALI Check360 Certified Lift Inspection Program. Be confident that your lifts have been annually certified, maintained, and inspected to meet safety and health standards.

When you choose Coats Connect to perform your annual lift inspection, you're calling upon a service network staffed coast to coast by our technicians who are supported by a central dispatch actively managing from call to completion.

Raise your expectations for quality lifts.

Be a full shop.

Lifting with Maxx Two Post Lifts is just the beginning of vehicle service. When you complete your service bays with Maxx Tire Changers and ProBalance Wheel Balancers, your entire shop standardizes on the same trusted technology. Our complete Full Shop portfolio keeps your people moving and technology turning.



The Coats Maxx Series Portfolio

The Coats Maxx portfolio - the technologies your techs need to make redundant tasks and manual processes faster and easier. The Maxx Portfolio includes single purpose technologies like tire changers and automotive lifts that do one job and do it better than any other on the market today.

For more information
visit coatscompany.com

or call us at

800-688-6359



COATS

Reinforced Columns

The 10K lifts are 20% heavier due to an inner column reinforcement tube to keep the lift from flexing and prematurely wearing on components.



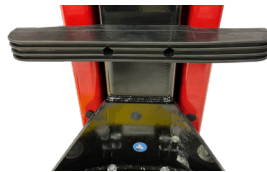
USA Made Bucher Pump

The 2HP Bucher power unit is designed to keep your bay in operation. The rubber mounted unit dampens sound and prevents the motor from vibrating excessively.



Bumper Guards

Carriage door bumper guards near the base of the lift columns protect the lift and prevent damage to the customer's vehicle.



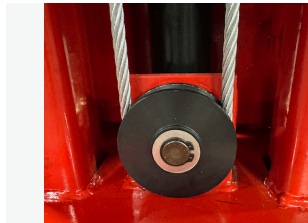
3 Piece Adjustable Arms

2N1 adjustable arms allow for asymmetrical and symmetrical lifting and provide longer reach and better access to hard to reach lift points.



Heavy Duty Pulleys

Self lubricating bronze bushings and large diameter cables reduce maintenance costs (3.5" pulleys and 5/16" cables)



Powdered Coated

Our lifts are Powder Coated and double baked to protect against structural corrosion and the harshest working environments

Field Adjustable Height

Multiple height and width options in our lift line expand the number of vehicles that can be serviced and accommodate space and ceiling height.

Simple Controls

Single point release controls can be mounted on either side at time of install to align with shop layout. Comes with document holder and ALL materials.

Stronger Arm Restraints

Reinforced carriage arm pin holes and plated gear style arm restraints make the lift arms last longer and sag less.

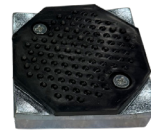
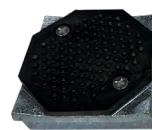
Fast Setup with Included Adapters

We include lifting adapters with every 10K Two Post Lift, so your techs can properly lift a wide range of vehicles that come into your shop, fast.

Optional Accessories

85607986	Round Double Screw
85009048	EV Adapter Set
4T2PEV4	Low Profile EV Arm Adapters (Set of 4)
4T2PRBEV	EV Rubber Block Adapters (Set of 4)
4TAEPS	Air Electric Station with Tool Holder
4TGMTA	GM Frame Adapter (Set of 2)

Included Accessories



Double Screw Pad Adapter (Set of 4)
#4T42100042



3" and 6" Nickel Plated Height Adapter Set (Set of 8 pcs)
#4T2PTA36



Sliding Arm Adapters (Set of 2)
#4T2PHA



For more information visit coatscompany.com, scan the QR code, or call us at 800-688-6359

coats

	N ² 10 (Flexmetric)	N ² 10S (Symmetric)
Capacity	10,000 lb/4.5 T	10,000 lb/4.5 T
A Overall Height	148" (3,759mm)	143" (3,632mm)
A Extended Height	172" (4,369mm)	172" (4,369mm)
B Overall Width	135 1/2" (3,441 mm)	145 1/2" (3,696mm)
C Width Between Columns	112 3/4" (2,864mm)	122 3/4" (3,118mm)
D Drive Thru Width	92" (2,337mm)	110" (2,794mm)
E Under Bar Clearance	141" (3,581mm)	136" (3,454mm)
F Lowered Height (standard pad fully in)	4" (114mm)	4" (114mm)
G Raised Height (standard pad fully out)	78" (1,981mm)	78" (1,981mm)
H Raised Height (with extensions)	87" (2,210mm)	87" (2,210mm)
I Front Arm Reach	18" -44" (457mm-1,118mm)	33" -62" (838mm-1,575mm)
J Rear Arm Reach	33" -62" (838mm-1,575mm)	33" -62" (838mm-1,575mm)
Lifting Time	55 seconds	55 seconds
Standard Power Requirements	230V, 1PH, 60Hz, 20A	230V, 1PH, 60Hz, 20A
*Optional Field Adjustable Height at Install	**A: 138"	A: 148" and B: 135 1/2" OR **A: 138" and B: 135 1/2"
ALI Certified	Yes (See part numbers)	Yes (See part numbers)
Part Numbers	4TV21NSR1 (Standard, Red) 4TV21NSB1 (Standard, Blue) 4TV21NXR1 (Extended, Red) 4TV21NXB1 (Extended, Blue)	4TV21SSR1 (Standard, Red) 4TV21SSB1 (Standard, Blue) 4TV21SXR1 (Extended, Red) 4TV21SXB1 (Extended, Blue)

* Not recommended set-up, only use when there is clearance issues during install. Dimensions C, D, E change accordingly.

** Cylinders still reach up to 148" when the lift is fully raised

Warranty: 5 yrs structural components
1 year parts, 6 months labor
2 yrs hydraulic components

